

Product name	Confidentiality level
HUAWEI E5220	Secret
Product version	Total 8 pages
V1.0	

E5220 Update Guide

Prepared by:	E5220 team	Date:	2012-11-6
Reviewed by:	E5220team	Date:	2012-11-6
Approved by:		Date:	



Huawei Technologies Co., Ltd.

All rights reserved



Revision record

Date	Revision Version	Change Description	Author
2012-11-6	1.0	First Draft	E5220 team



Table of Contents

1	Upgrade Description	4
2	List of Upgrading Files	4
3	Upgrading Process	4
3.1	Preparation before Upgrading.....	4
3.2	Normal upgrade process.....	4
3.3	Check software version.....	8
3.4	Abnormality Handling Process During Upgrading	8

1 Upgrade Description

This document describes Upgrade Guide of E5220

2 List of Upgrading Files

E5220 upgrade file.

3 Upgrading Process

3.1 Preparation before Upgrading

1. Use PC and USB line.
2. Make sure the Operating System is windows XP/vista/win7.
3. Make sure adequate power to the computer during the upgrade process.
4. Make sure the board battery is fully charged.
5. Make sure using the correct Upgrade tool about different Operating System

3.2 Normal upgrade process

1. Start E5220 connect it with PC using USB. After the Com port as below displayed:

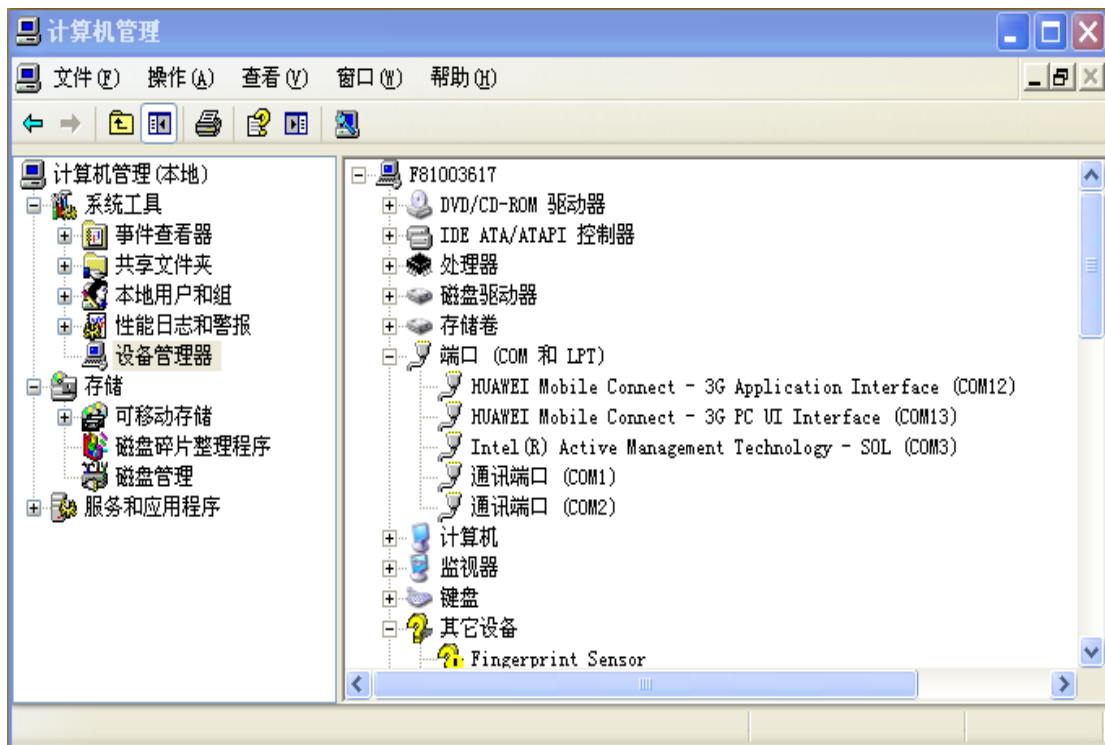


Figure 3.2.1 Port interface

2. Start Upgrade file, as below displayed, then click"Next"

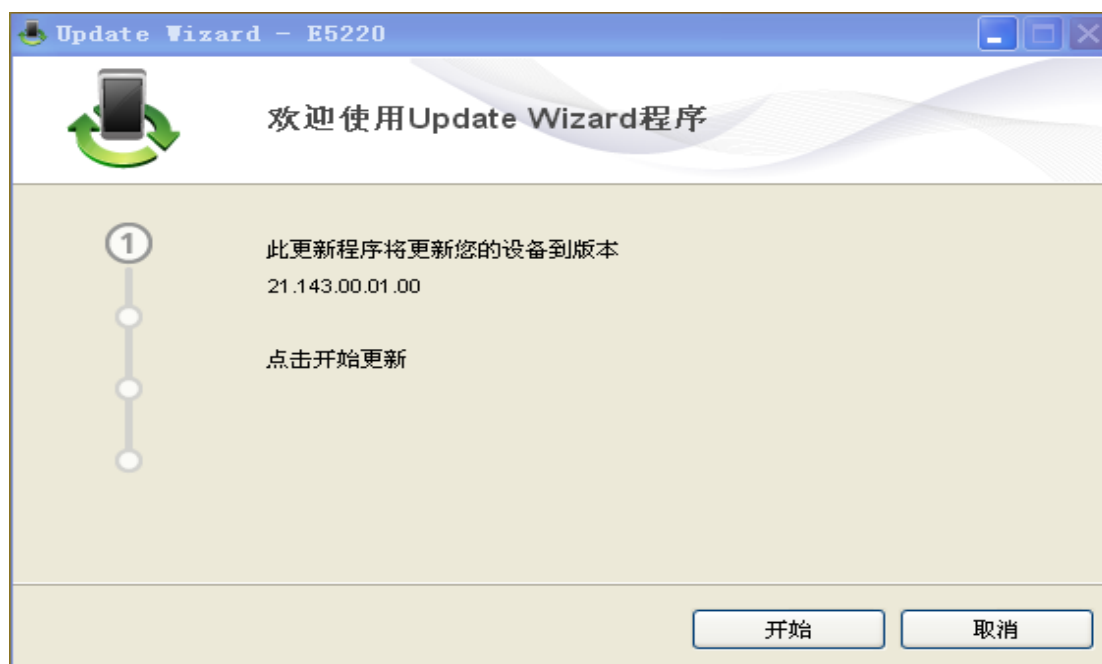


Figure 3.2.2 Upgrade

3. click" Start "

In this process, the upgrade tool will send an HTTP request, if the firewall blocks will pop up a confirmation window, click "Yes";if the firewall is not blocking the confirmation window does not pop up.



Figure 3.2.3 Upgrade

4. Click Start, the board will enter updating. At the following step, the board will reset and enter updating again. It will take several times but not long.

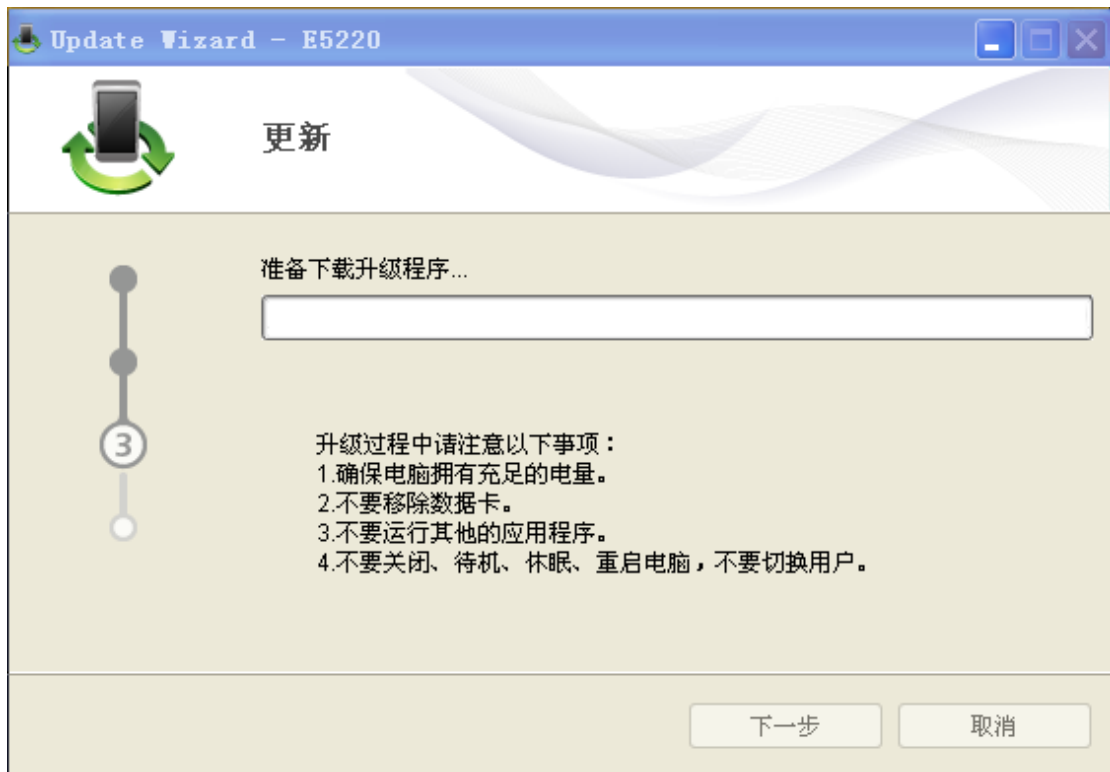


Figure 3.2.4 Upgrade

5. Then start upgrading, as below displayed

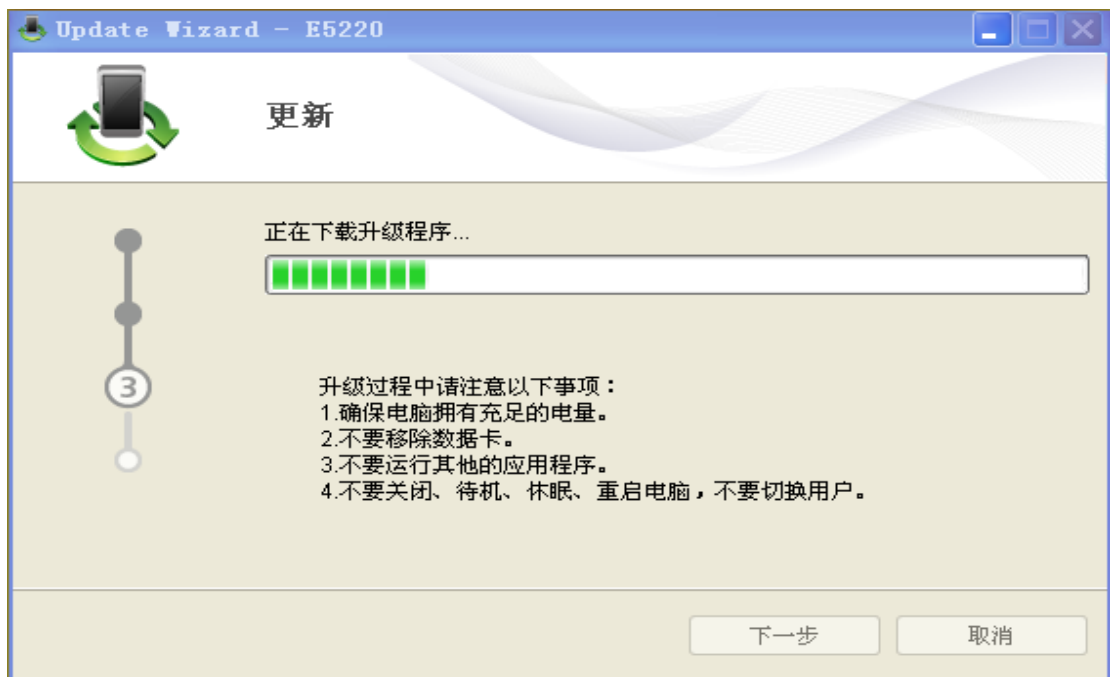


Figure 3.2.5 Upgrade

6. After upgrade complete, the board reboots automatically, as below displayed:

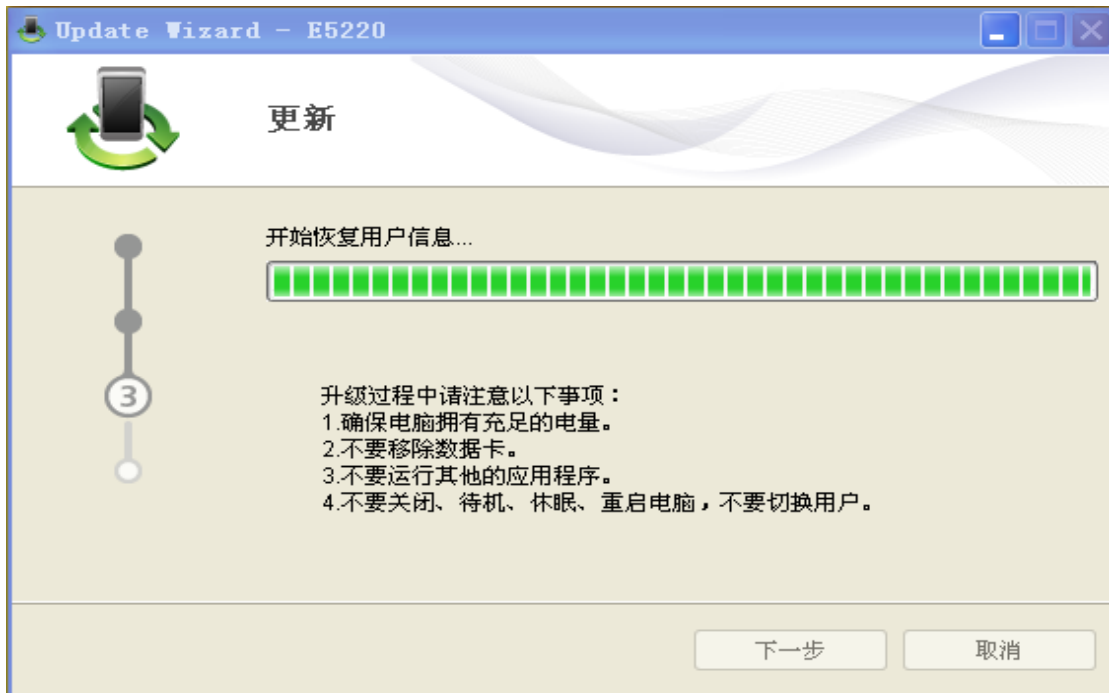


Figure 3.2.6 Upgrade

7. At last, all work complete, as below displayed (actual version is depended on the upgraded firmware), click "Finish".

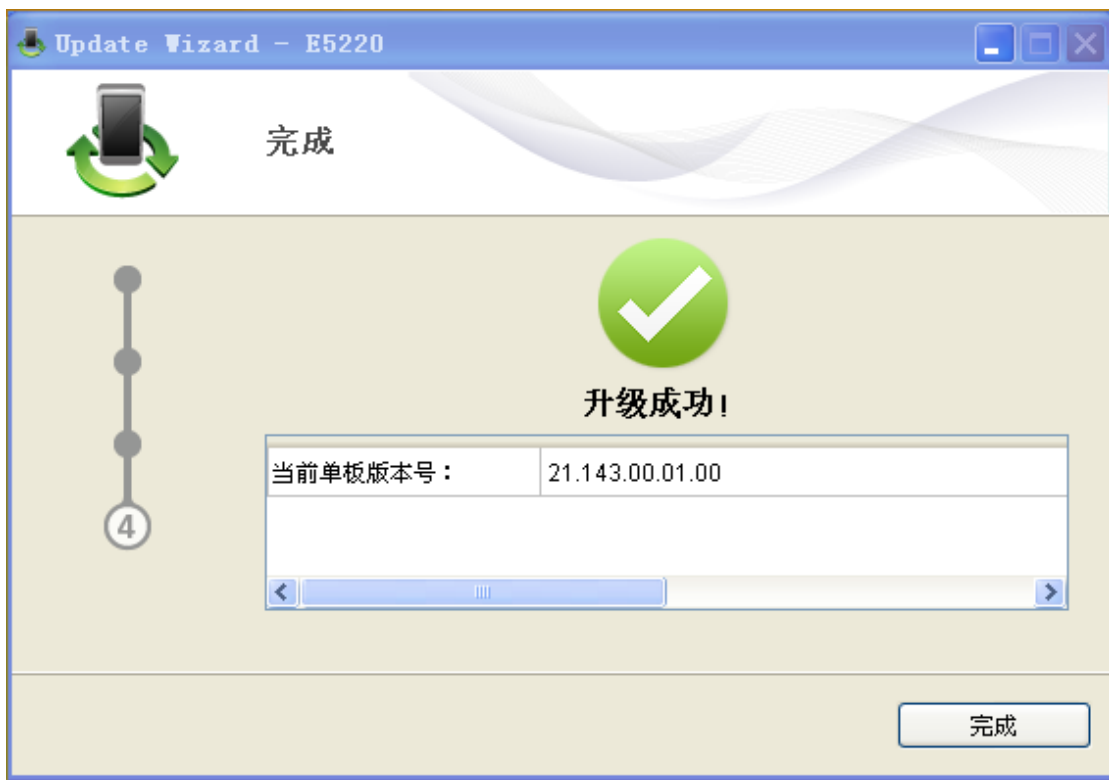


Figure 3.2.7 Upgrade Finish

3.3 Check software version

1. To the homepage: <http://192.168.1.1>, and login

then select “Settings-->”System” --> “Device Information” can see Version NO., as below displayed:

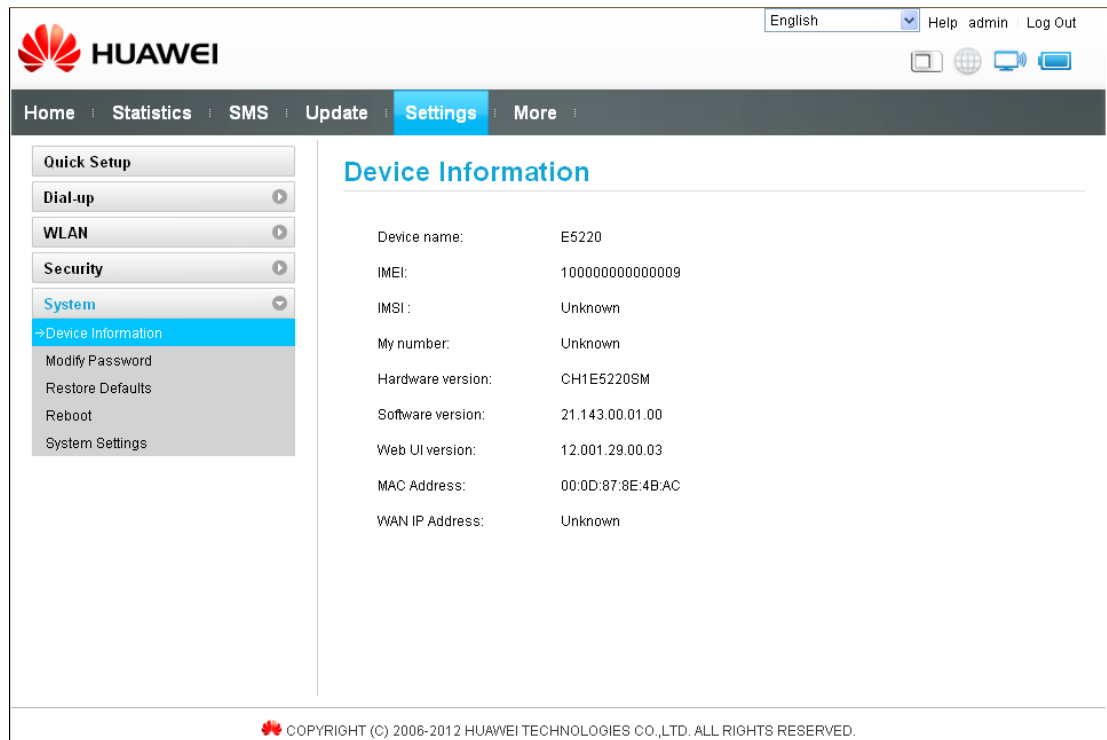


Figure 3.4.1 Version No.

3.4 Abnormality Handling Process During Upgrading

1. if failed when Upgrading firmware according to the method of section 3.2 and the upgrade software is correct, try to upgrade again according to the method of section 3.3 .
2. If link disconnected when upgrading firmware according to section 3.2, such as USB between PC and EC5321 disconnect, power shut off etc, try to upgrade again according to the method of section 3.3.
3. If board is disconnected when Upgrading firmware according to the method of section 3.2, the board can't run normally. And try to upgrade again according to the method of section 3.3