



Product Name	Confidence
E3276s-150	Public
Product Version	Total 15
V200R002	

E3276s-150 V200R002 Upgrade Guide

Prepared by HiLink E3276s-150 Team Date 2014-08-04
Reviewed by _____
Approved by _____



Huawei Technologies Co., Ltd.

All rights reserved

(REP01T01 V2.6 / for internal use only)



Revision record 修订记录

Date	Revision Version	CR ID / Defect	Sec No.	Change Description	Author
2014-08-04				First Draft	HiLink E3276s-150 Team

Table of Contents

E3276s-150 V200R002.....	1
Upgrade Guide	1
1 Brief Introduction	5
1.1 Purpose	5
1.2 Important notes.....	5
2 Upgrade environment	5
3 Note	5
4 Upgrade steps.....	5
4.1 Plug the dongle to PC, and open device manager, the detail as follow	6
4.2 please make sure all ports can map out, the detail as bellow	6
4.3 Update WEBUI	6
4.3.1 Select the WEBUI exe as following Picture 5 and double click as Picture 6(Note: The red box is the version number).	6
4.3.2 Click “Start” to start update.....	7
4.3.3 Wait for the update program, the device is checking information.	8
4.3.4 The device is ready to update.	9
4.3.5 Updating.....	9
4.3.6 The WEBUI finished update as following Picture 11, then click “Finish”.....	10
4.4 Update Firmware	10
4.4.1 Then update Firmware. Select the Firmware exe as following Picture 12 and double click as Picture 13(Note: The red box is the version number.).	10
4.4.2 Click “Start” to start update.....	11
4.4.3 Wait for the update program, the device is checking information.	12
4.4.4 The device is ready to update Firmware.	12
4.4.5 Updating Firmware.....	13
4.4.6 The device is resume user’s information.	14
4.4.7 Finished update Firmware as follow Picture 19, then click “Finish”.....	14
4.5 After update all, then the Network adapters in the Device Manger can map out the NDIS device and the picture show as follow.	15



HUAWEI E3276s-150 V200R002

Update Guide

Key Word:

Software update

Summary:

Software update

Abbreviations list:

Abbreviations	Full spelling	Chinese explanation

1 Brief Introduction

1.1 Purpose

Described how to update to the latest software

1.2 Important notes

1. Support win7\Vista OS.
2. Make sure PC has enough electric to update software.
3. E3276s-150 can run normally, USB port can map out.

2 Upgrade environment

1. Download software package (including WEBUI exe、Firmware exe an), save them in your PC.

3 Note

1. You must confirm information of your dongle. If your dongle same as below picture you can update this software. If your dongle don' t same with below information please stop update. (Device name must E3276, Web UI version must end of 03, Software version must end of 00)



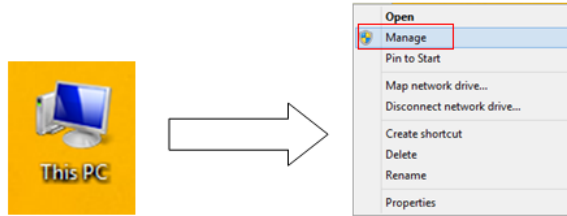
Picture 1

2. You must follow the steps as document described and showed to update.

4 Upgrade steps

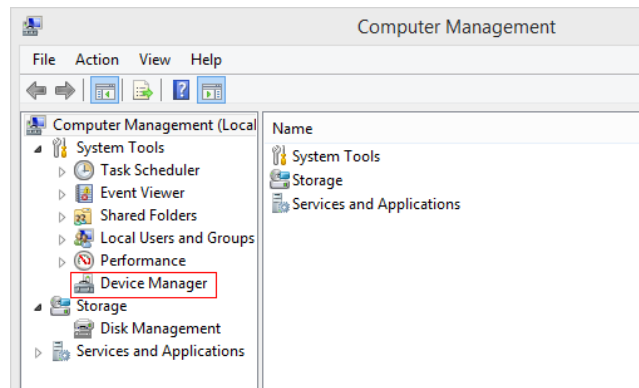
4.1 Plug the dongle to PC, and open device manager, the detail as follow

1. Select the icon on the PC desktop named My Computer, then Right click on it and select Manage options, show as follow picture.



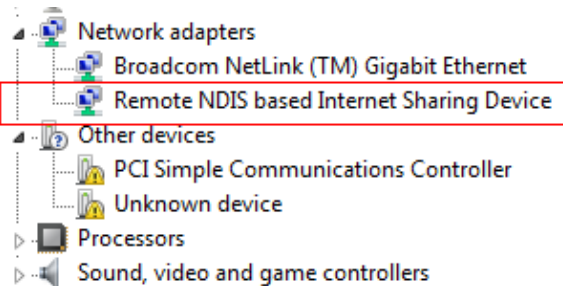
Picture 2

2. Select Device Manager options , the picture show as follow.



Picture 3

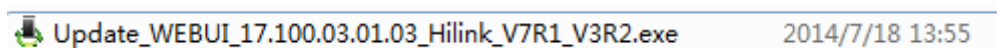
4.2 please make sure all ports can map out, the detail as bellow



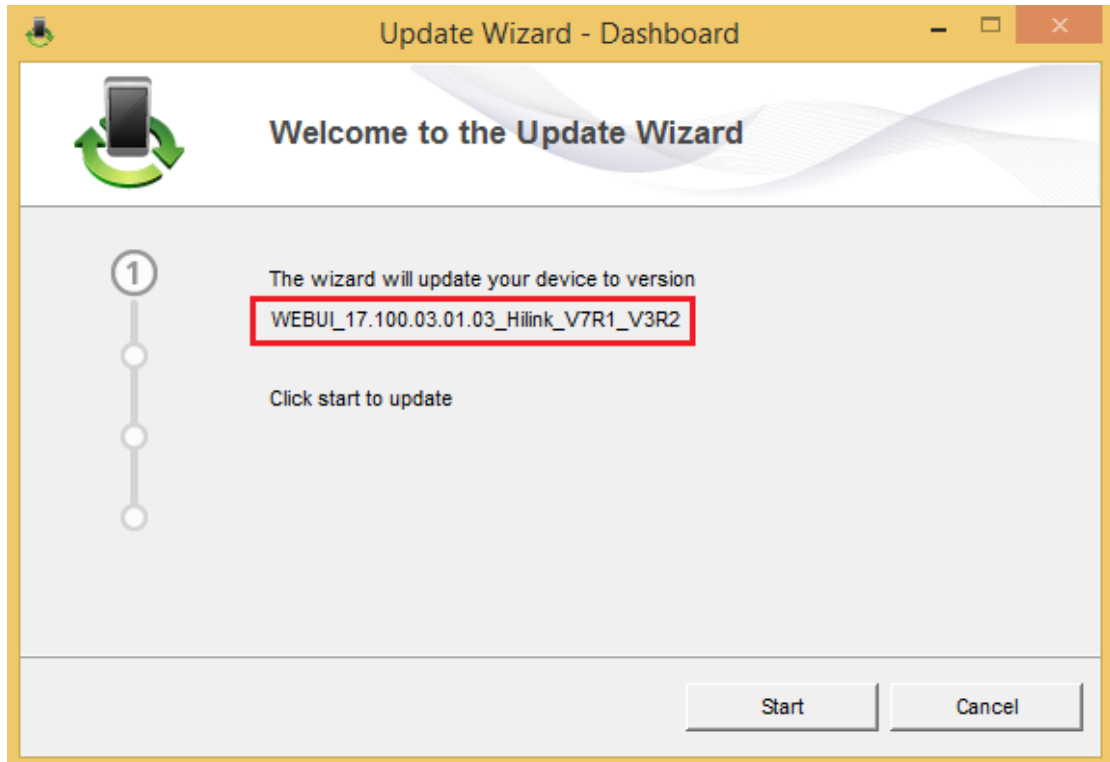
Picture 4

4.3 Update WEBUI

- 4.3.1 Select the WEBUI exe as following Picture 5 and double click as Picture 6(Note: The red box is the version number).

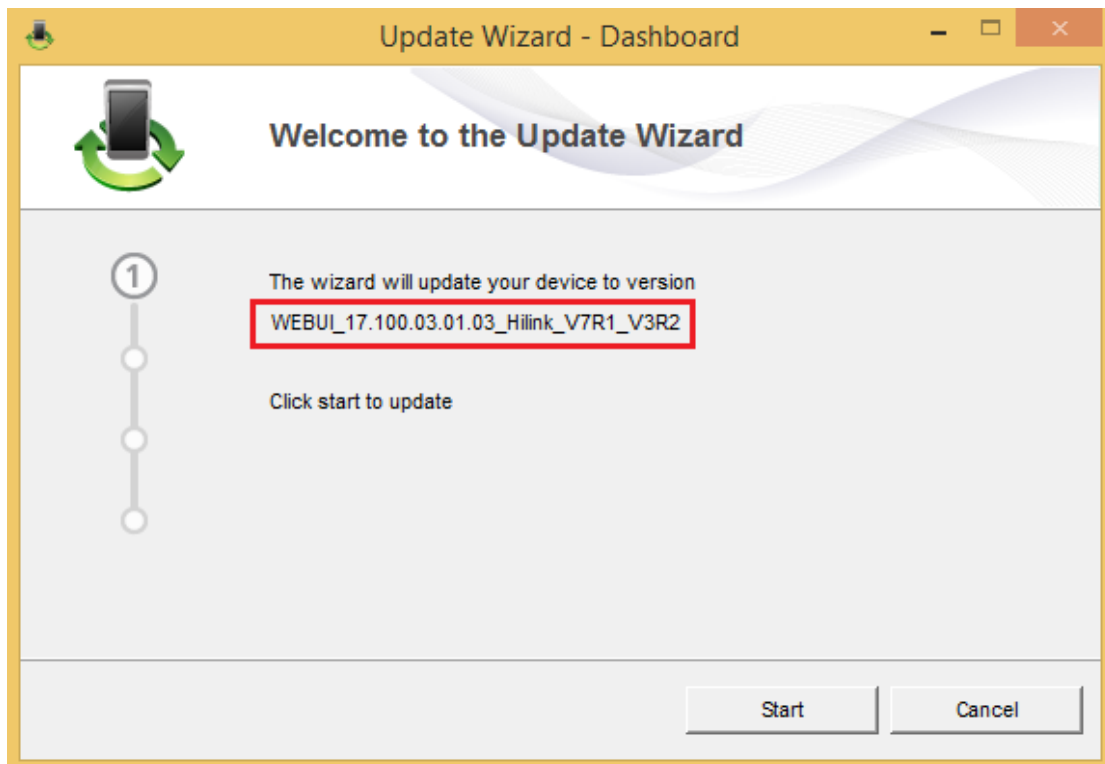


Picture 5



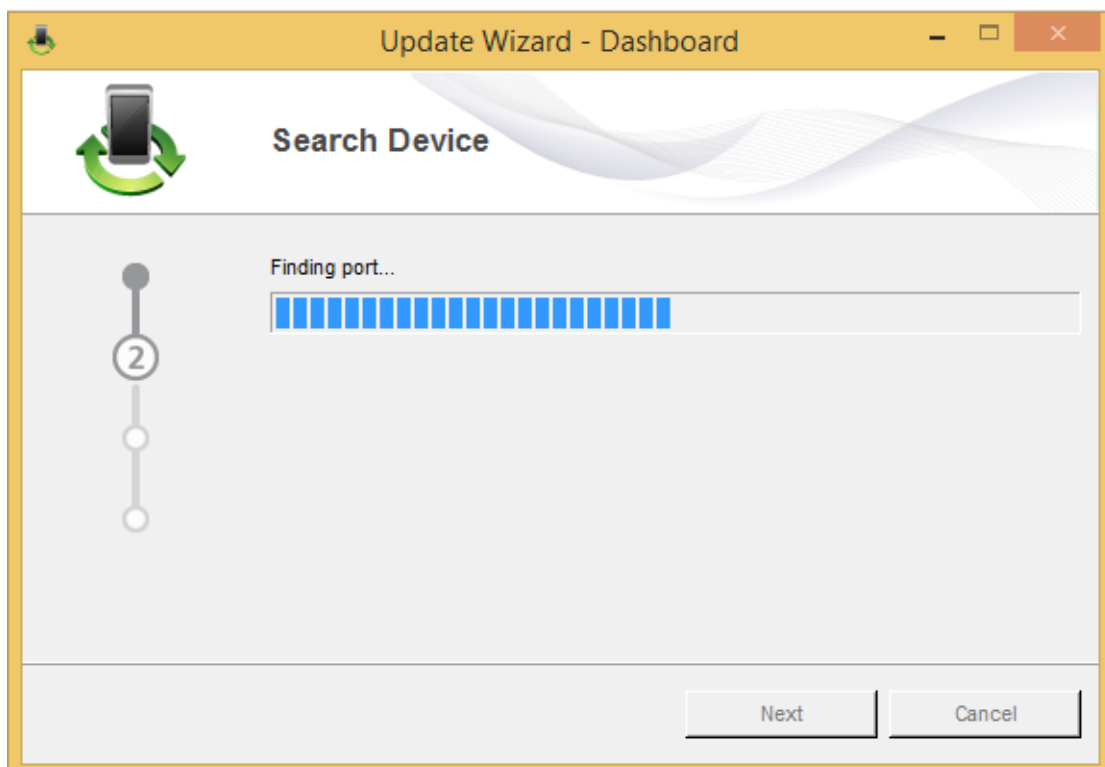
Picture 6

4.3.2 Click “Start” to start update.



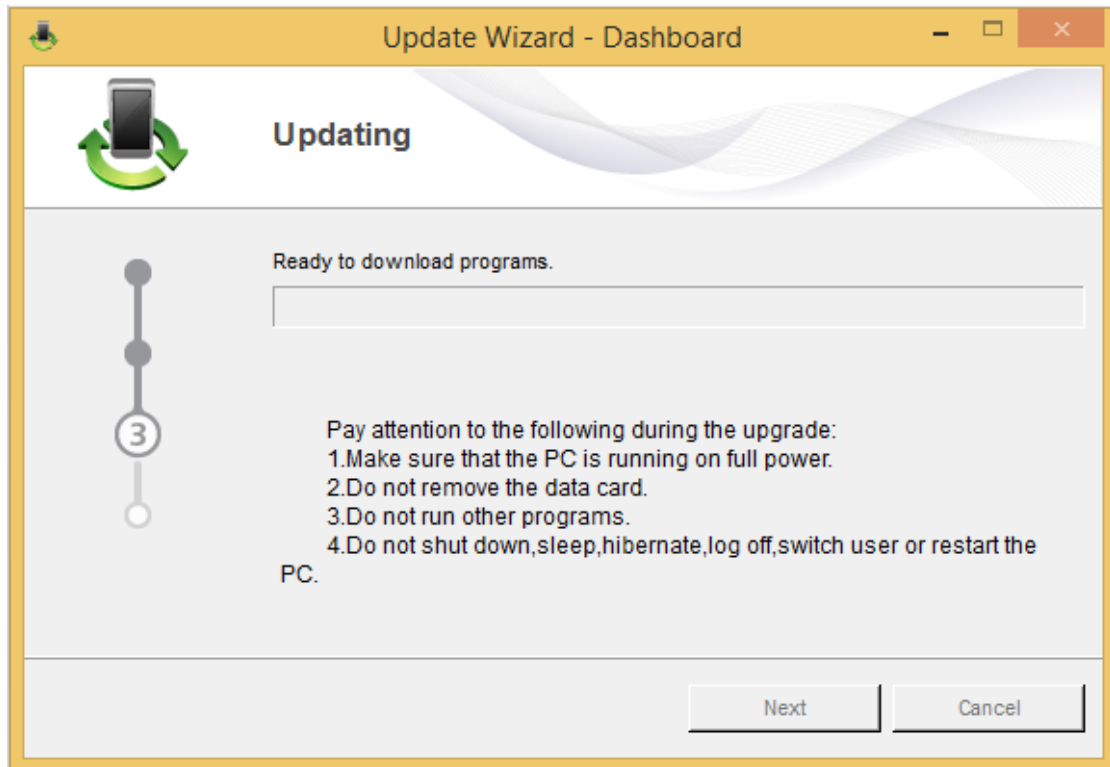
Picture 7

4.3.3 Wait for the update program, the device is checking information.



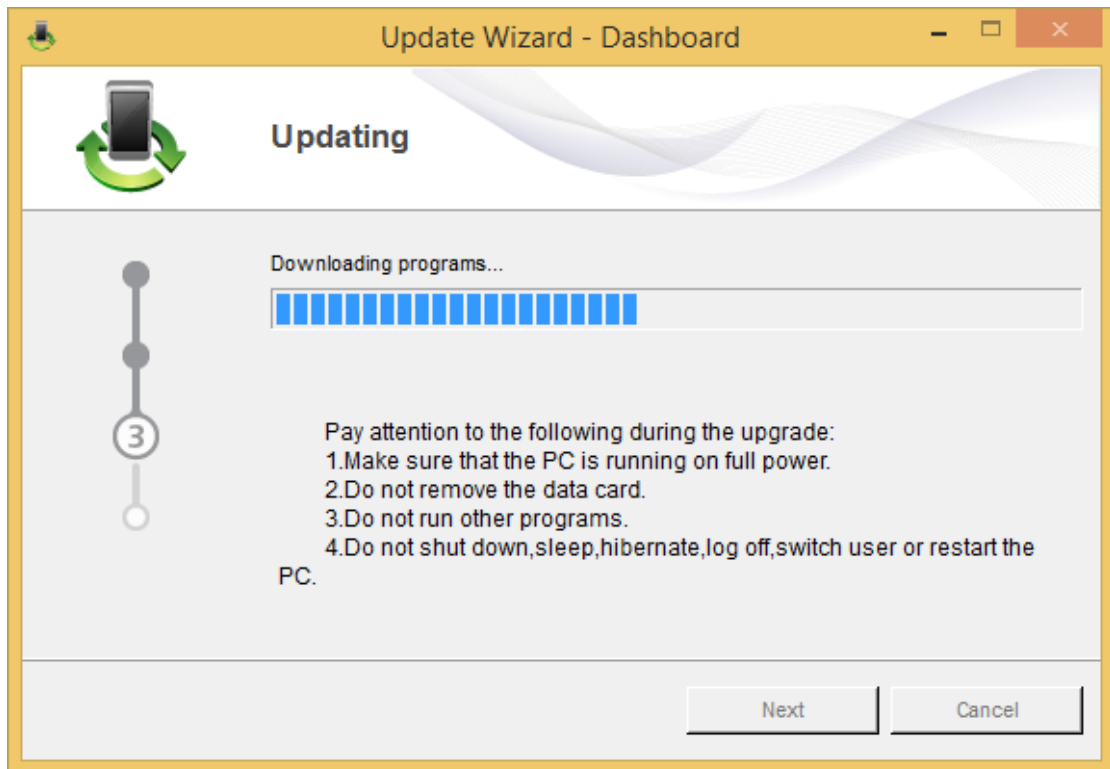
Picture 8

4.3.4 The device is ready to update.



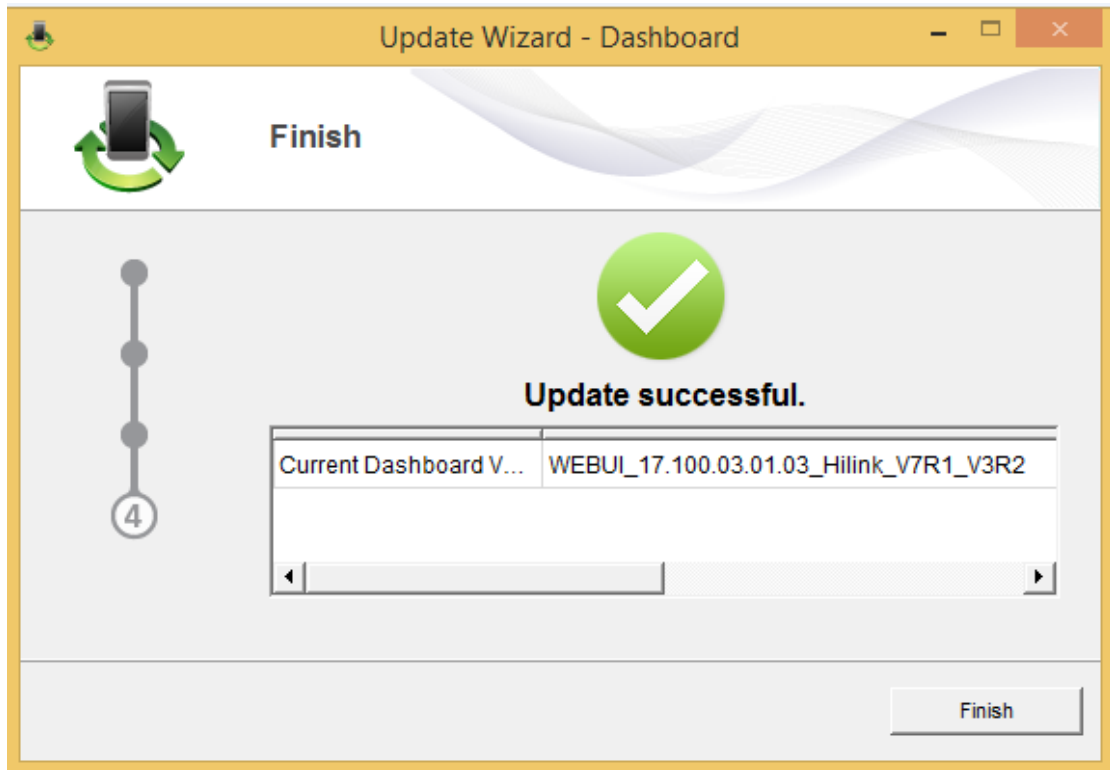
Picture 9

4.3.5 Updating.



Picture 10

4.3.6 The WEBUI finished update as following Picture 11, then click “Finish”.



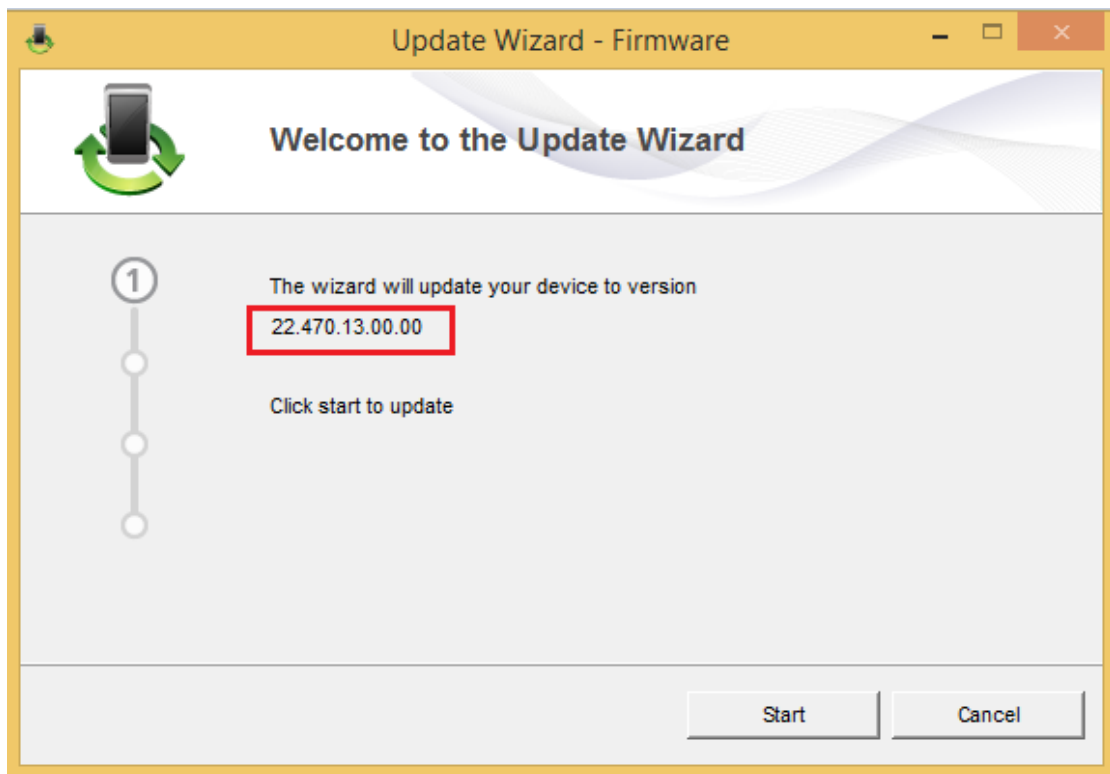
Picture 11

4.4 Update Firmware

4.4.1 Then update Firmware. Select the Firmware exe as following Picture 12 and double click as Picture 13(Note: The red box is the version number.).

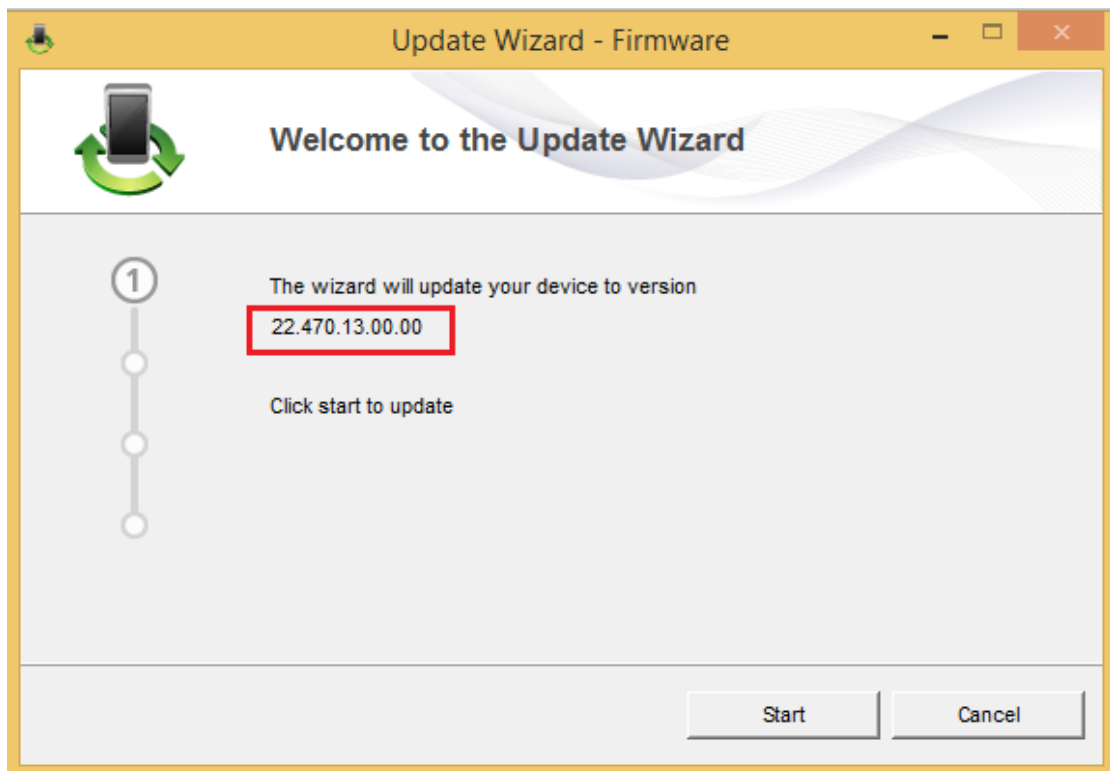


Picture 12



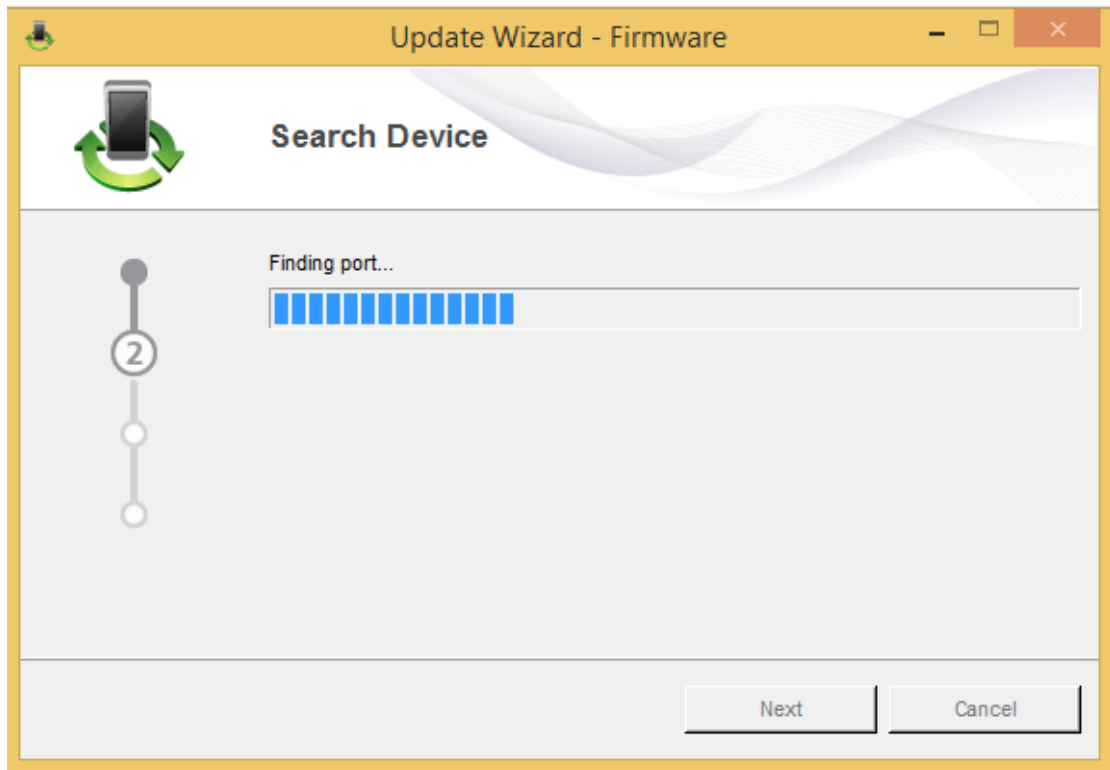
Picture 13

4.4.2 Click “Start” to start update.



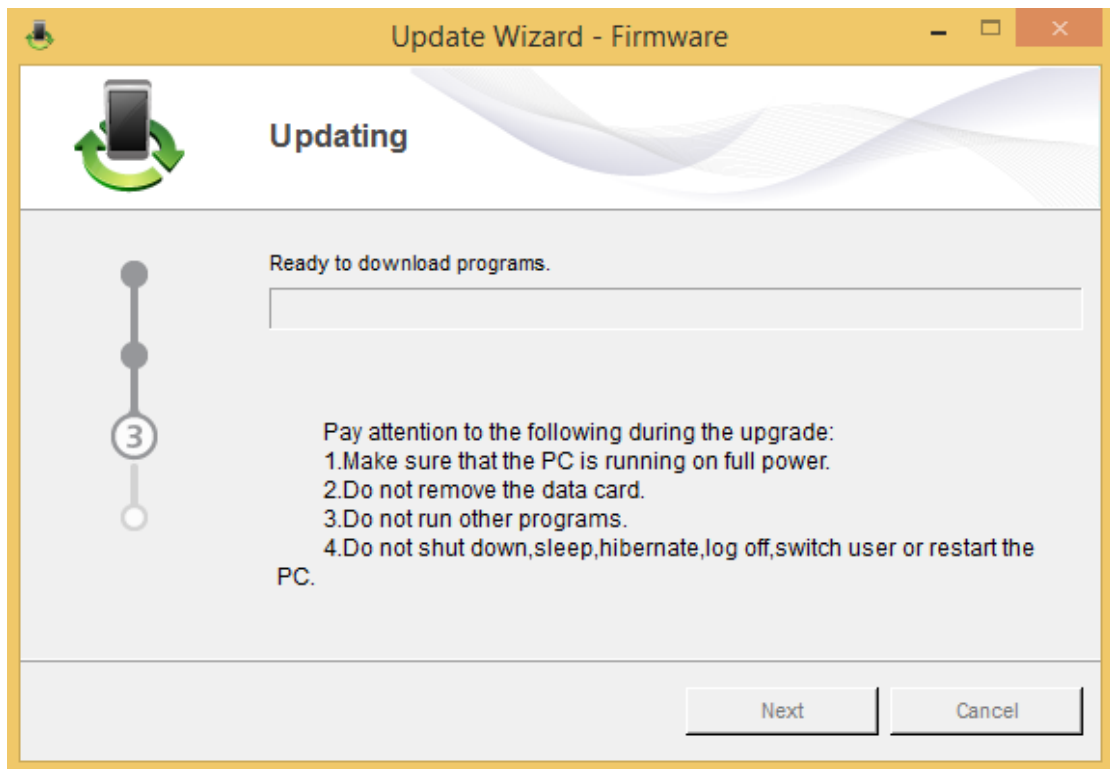
Picture 14

4.4.3 Wait for the update program, the device is checking information.



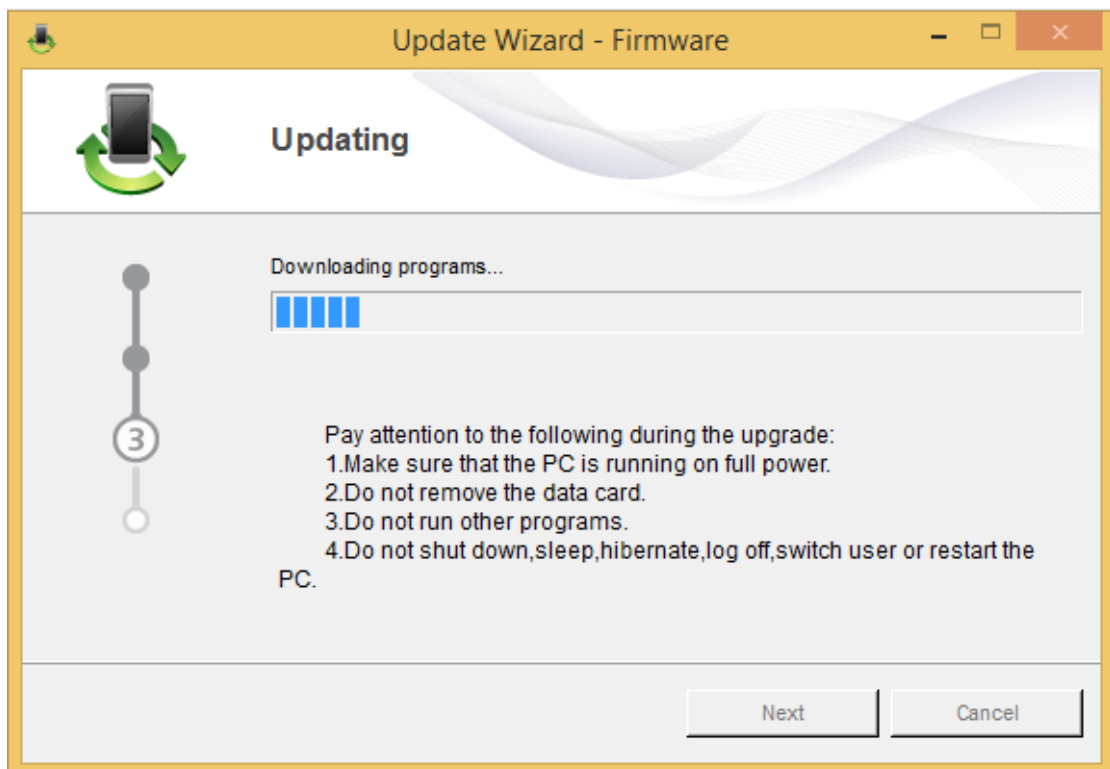
Picture 15

4.4.4 The device is ready to update Firmware.



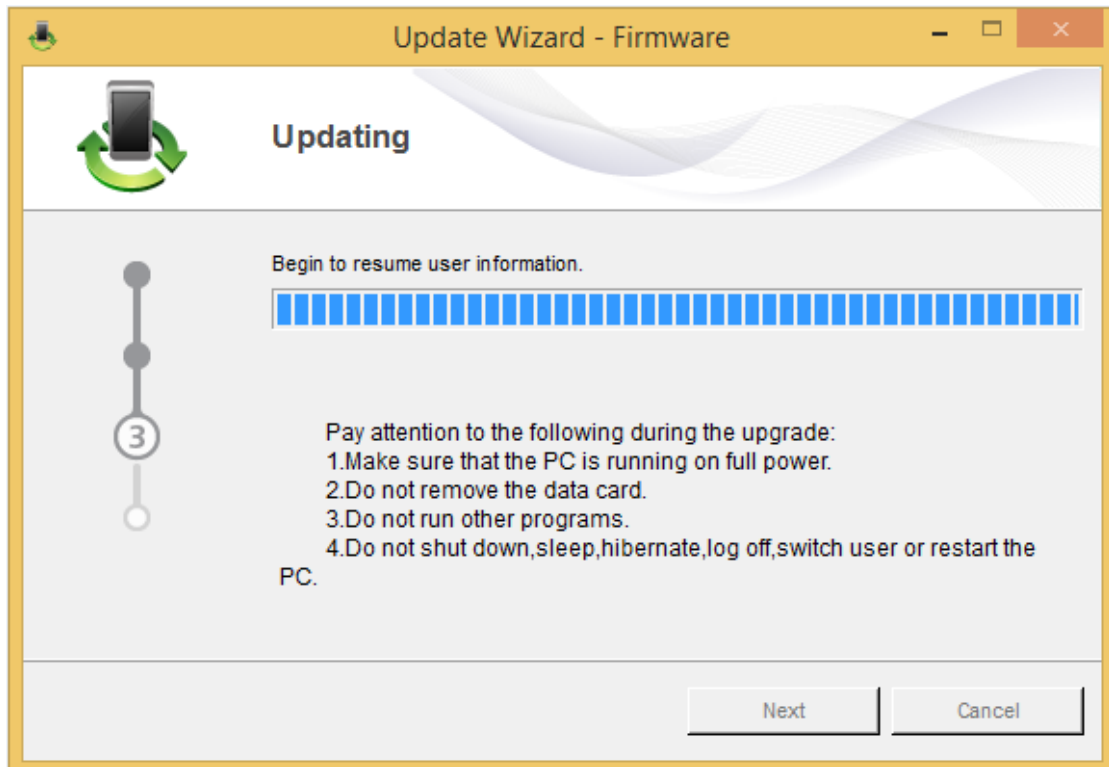
Picture 16

4.4.5 Updating Firmware.



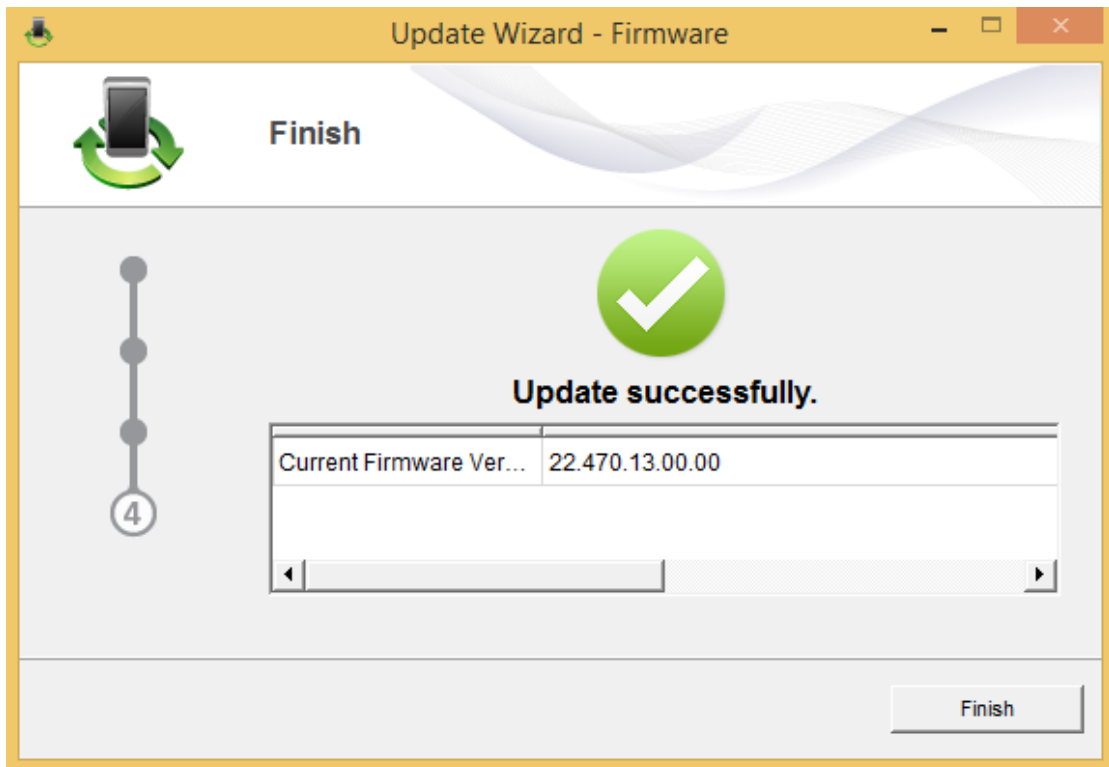
Picture 17

4.4.6 The device is resume user's information.



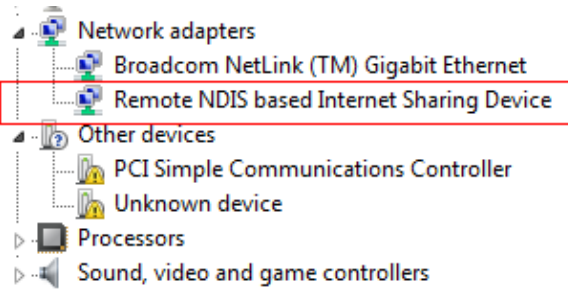
Picture 18

4.4.7 Finished update Firmware as follow Picture 19, then click "Finish".



Picture 19

- 4.5 After update all, then the Network adapters in the Device Manger can map out the NDIS device and the picture show as follow.**



Picture 20